

Applications

Teguflex FP are suitable for a variety of applications, where aggressive chemicals (strong acids, aromatic solvents) or high temperature products (overheated water, steam) are involved. They -

- Compensate for thermal elongation and misalignment.

- Isolate vibrations, dampen noise and pressure surges, in connection with pipes, pumps, etc.

- Teguflex FP do not propagate fire (self-extinguishing).

Note: Do not use with either low molecular weight ethers or ketones applications.

Design

Teguflex FP expansion joints are composed of a special fluoroelastomeric FKM compound, suitable for extremely tough applications and with a unique fabric reinforcement, ensuring a long service life with retained properties.

- standard lengths 130/150/200 mm.
- swivel flanges.

Materials

Colour Label	Inner tube	Outer cover	Max temp. °C	Applications
Double Purple	Viton®	Viton®	150°	Highly aggressive chemicals and/or high temperature.

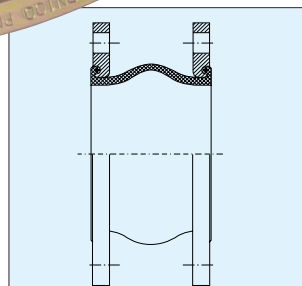
Pressure rating

Pressure	Temperature	DN 25 - DN 150	DN 200 - DN 300	DN 350 - DN 600
Max. working pressure	90°C 150°C	10 bar 8 bar	8 bar 6 bar	8 bar 6 bar
Test pressure	20°C	16 bar	12 bar	12 bar
Burst pressure	20°C	>40 bar	>30 bar	>30 bar

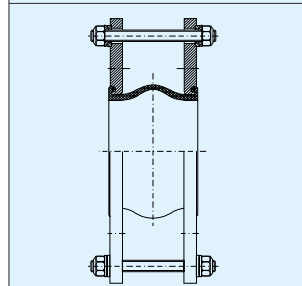
Teguflex® FP

Expansion Joints

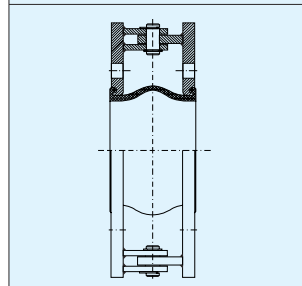
DN 25-DN 600



Type U
Standard unit for axial, lateral and angular movements.



Type L
Unit with tie bars for lateral movements.



Type A
Unit with hinges to take up angular movements in one plane

Teguflex FP BL 130-200 DN 25-DN 600

Flange qualities

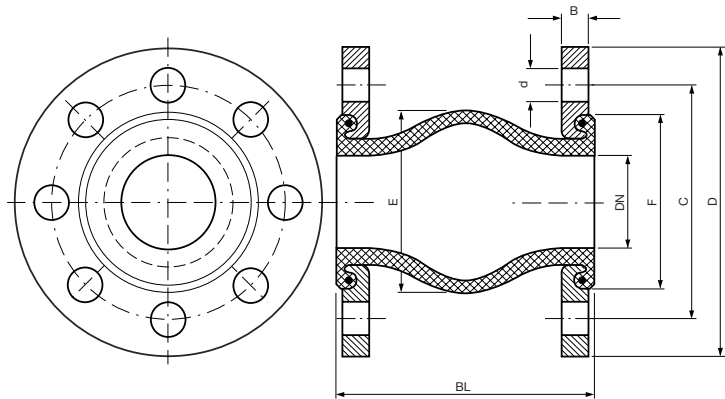
Zinc plated steel flanges are supplied as standard, however other types are available - stainless steel, hot dipped galvanized, etc.

Flange measurements

DN32 – DN600 DIN 2501 PN 6/10/16

(see Flange dimension table for details)

Other flange standards also available. Please ask.



Dimensions and movements

DN mm	BL mm	Eff.cross-sectional area Q(cm ²)	(E) mm	(F) mm	Permissible movements				Max. vacuum		Weight
					Compression mm	Elongation mm	Lateral mm	Angular	W/o support ring bar	With support ring bar	Incl. flange kg
25/32	130/150	35	77	72	30	20	20	35°	0.8	1.0	3
40	130/150	45	85	80	30	20	20	35°	0.8	1.0	3
50	130/150	56	95	90	30	20	20	35°	0.7	1.0	4
65	130/150	79	110	105	30	20	20	30°	0.6	1.0	5
80	130/150	104	125	120	30	20	20	30°	0.5	1.0	6
100	130/150	136	145	140	30	20	20	25°	0.5	1.0	7
125	130/150	188	170	165	30	20	20	25°	0.4	1.0	8
150	130/150	254	195	190	30	20	20	15°	0.3	1.0	10
200	130/200	415	245	240	30	20	20	15°	0.3	1.0	15
250	130/200	615	295	290	30	20	20	10°	0.2	1.0	20
300	130/200	855	345	340	30	20	20	10°	0.2	1.0	24
350	130/200	1290	430	425	30	20	20	10°	0.2	1.0	32
400	200	1628	475	470	30	20	20	10°	0.2	1.0	45
450	200	2054	532	510	30	20	20	10°	0.2	1.0	52
500	200	2546	590	560	30	20	20	10°	0.2	1.0	63
600	200	3466	685	655	30	20	20	6°	0.2	1.0	95

Note: Maximum values do not apply simultaneously.

Optional equipment

Vacuum rings, Flame guard etc., are available.

Approvals (DN 25-DN 300)

Approvals available upon request.

Distributor:

Interflex Hose & Bellows Ltd. • www.interflex.co.uk
 Ludlow Business Park • Ludlow • Shropshire • SY8 1XF • United Kingdom
 Tel: +44 (0)1584 878500 • Fax: +44 (0)1584 878115 • Email: teguflex@interflex.co.uk